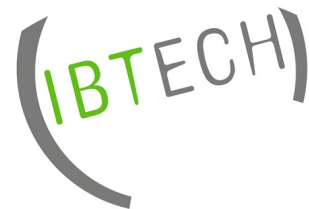


# Enterprise Platform Management with OpenShift Plus

Aras YORGANCI

Senior Designer / IBTECH



# Agenda

- Red Hat Advanced Cluster Management for Kubernetes
  - Governance
  - Inventory Management
- Red Hat Advanced Cluster Security for Kubernetes
  - Application Security
  - Platform Security
- Red Hat Ansible Automation Platform
  - Provisioning Automation
  - Baseline Tracking

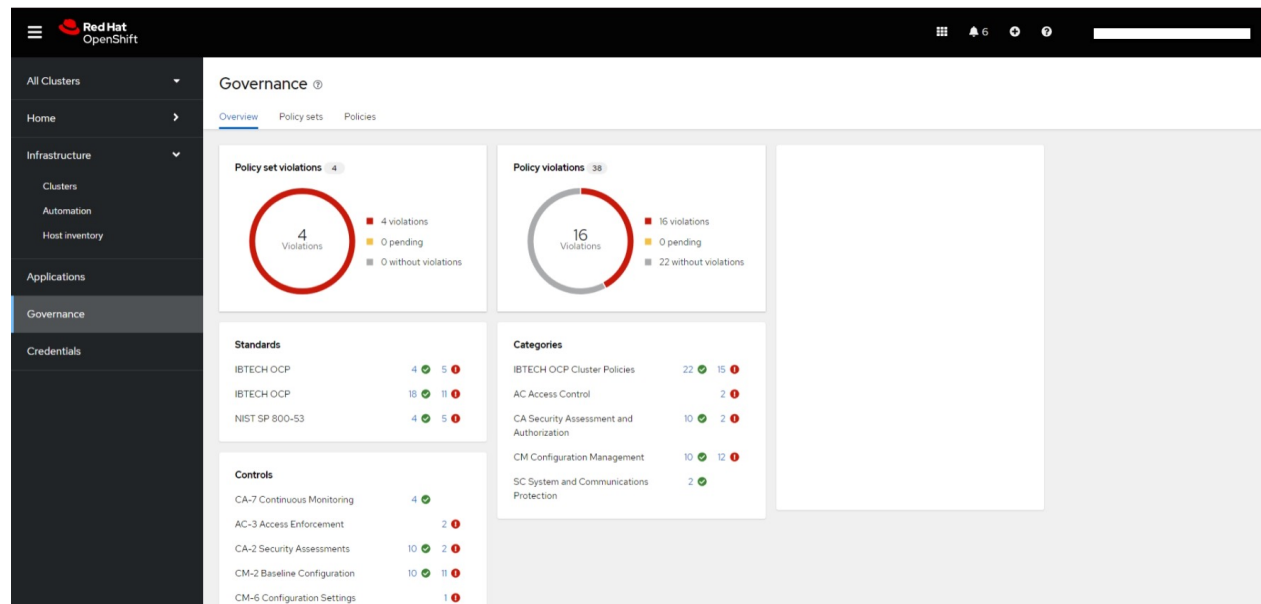
# Platform Governance

- As the number of clusters increases, it becomes difficult to follow corporate standards.
- Meeting installation standards across different domains with similar structures is highly important.
- Governance teams expect reports and dashboards about platforms with which they are less familiar.



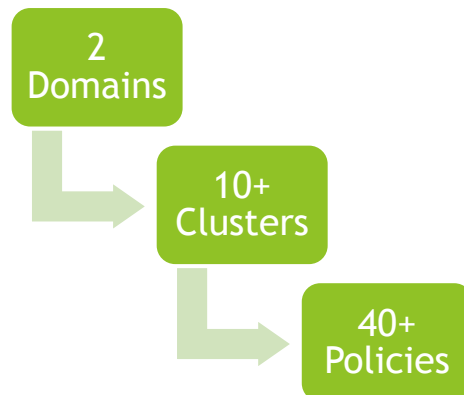
# Platform Governance

- The governance lifecycle of Red Hat ACM addresses these challenges on our platforms at IBTECH.
  - We can keep standards and policies flexible for all domains we manage.
  - We can share current governance status and reports with other teams.



# Platform Governance

- The governance lifecycle of Red Hat ACM addresses these challenges on our platforms at IBTECH.
  - We can install and configure new platforms much easier with ACM policies.
  - We reduced day-2 operation load on our platforms which contains many different infrastructures.

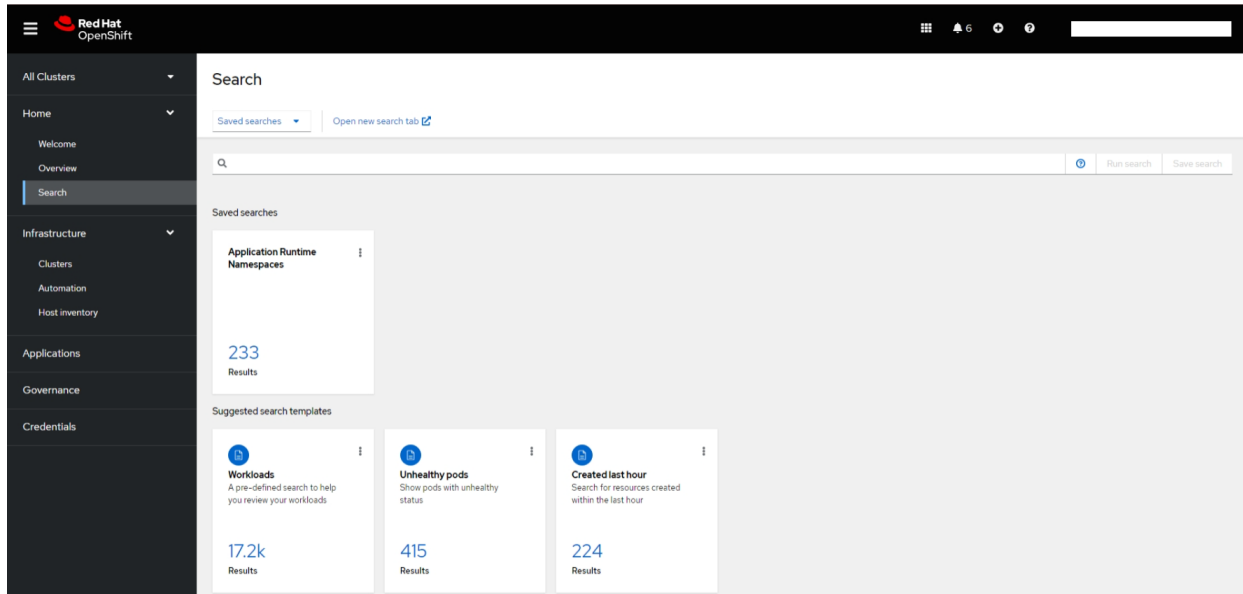


# Inventory Management



- As OpenShift platforms grow and new applications arrive, the need to keep an inventory of the environment naturally becomes more important.
- Each team may want to keep its own inventory, but it would be best to implement a centralized and platform-integrated solution.

# Inventory Management



- Red Hat ACM offers an automatic inventory solution, indexing managed clusters' resources in its database with APIs and CLI.
- We can search 1000+ resources and their related objects through CLI.

# Platform Security



- Expanding platform raises security concerns. Organizations undergo rapid container transformation while ensuring a solid foundation. Need security tools for easy integration, especially for teams new to container environments like ACM audit monitoring.

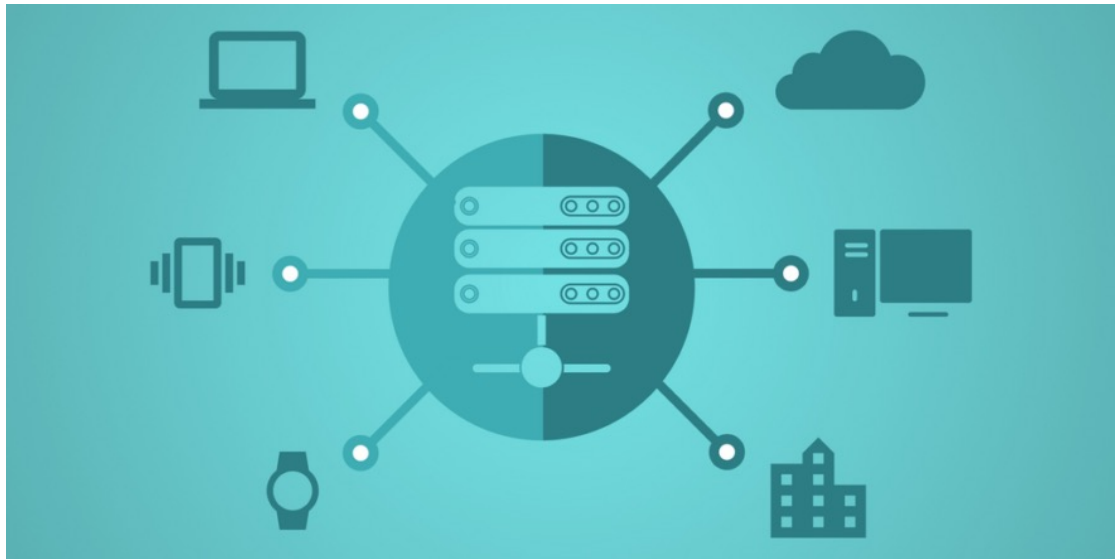


# Platform Security

- At this stage, Red Hat ACS has been highly convenient for us. With the central ACS established through Platform Plus, we can continuously monitor platform-level security audits with the version 4 and generate desired reports.



# Application Security



- Monitoring platform and application security is essential. New applications necessitate assessments before deployment and ongoing monitoring afterward. Choose container security tools with direct platform integration and flexibility.

# Application Security

- Security tools should integrate seamlessly into pipelines and find a place in a managed product hierarchy. Use simple tools to avoid overwhelming security teams or those new to container environments. In environments with numerous vulnerabilities, assessing criticality becomes challenging.



# Application Security



**Red Hat**  
Advanced Cluster  
Security  
for Kubernetes



StackRox

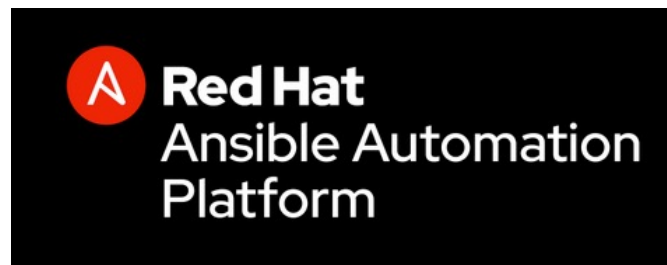
# Provisioning Automation

- In the rapidly evolving world of container orchestration, provisioning requests need to be integrated into enterprise processes.



# Provisioning Automation

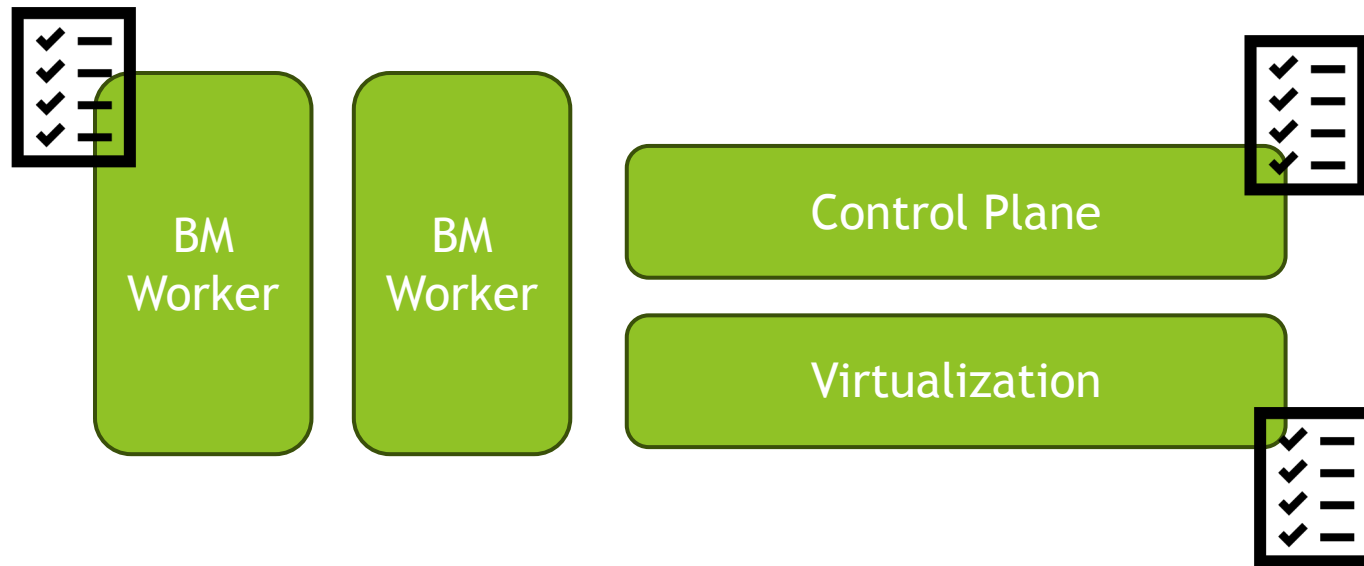
- At IBTECH, the most intense demands we faced for project creation and egress IP assignments were addressed with the assistance of the Ansible automation platform.



**RED HAT**<sup>®</sup>  
**OPENSIFT**  
Container Platform

# Baseline Tracking

- The OpenShift platform includes various components, such as VM hypervisors, and it is necessary to monitor their baseline compatibilities as well.



(IBTECH)



Thank you...